



## **Ice Machine Parts List for Series i-522 Models**

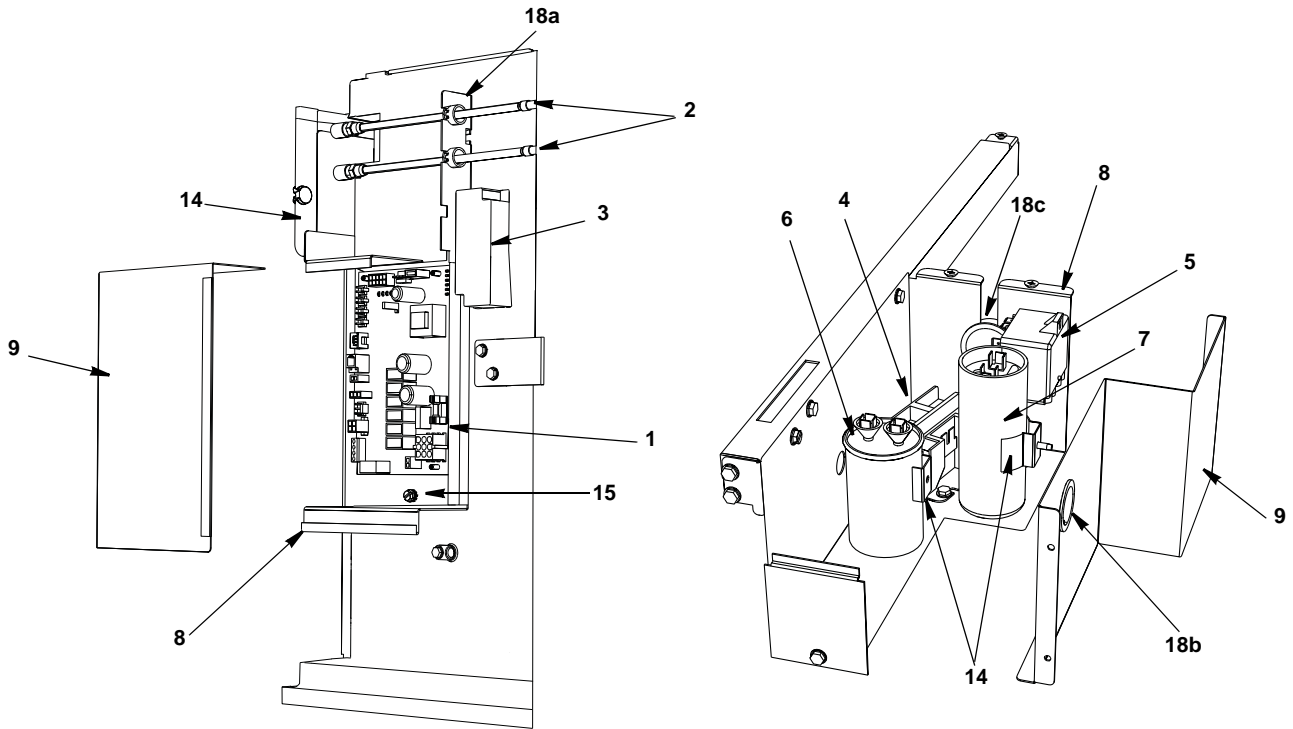
**iD0522A**

**iY0524A**

**iD0523W**

**iY0525W**

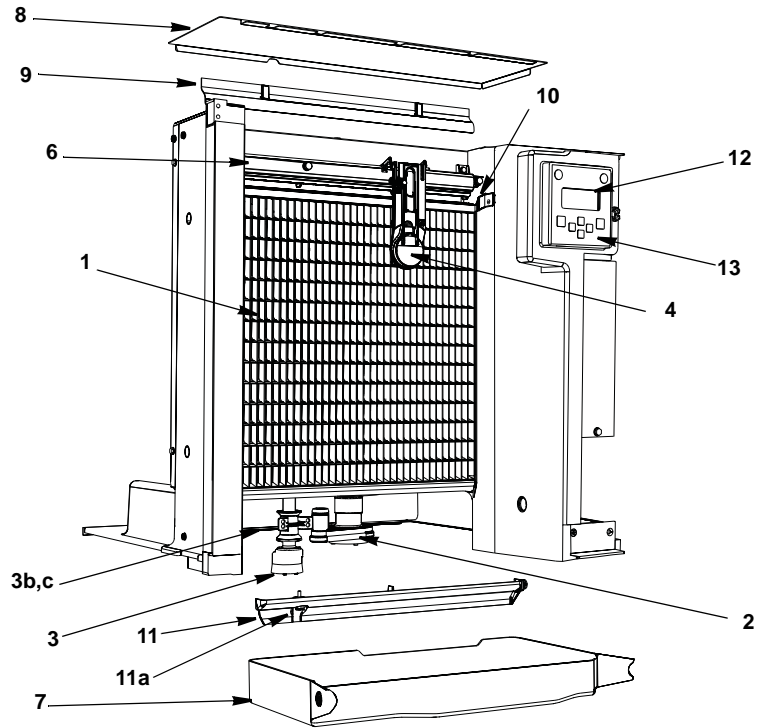
# i522 CONTROL BOX



## DESCRIPTION

	<b>PART NO.</b>
1 Control Board (for use with all voltages) . . . . .	000008309
a. 8 amp Ceramic Fuse – Mounted on Control Board . . . . .	000009181
2 Refrigeration Service Valve Assembly . . . . .	83-7326-3
3 Luminaire Power Supply . . . . .	K00424
4 <b>Contactors</b>	
a. 115V/60 Hz/1ph . . . . .	20-0658-9
b. 208-230V/60 Hz/1ph . . . . .	20-0659-9
5 <b>Start Relay</b>	
a. 115V/60 Hz/1ph) . . . . .	20-0205-3
b. 208-230V/50-60 Hz/1ph) . . . . .	20-0792-3
6 <b>Run Capacitor</b>	
a. 115V/60 Hz/1ph) . . . . .	20-1014-3
b. 208-230V/60 Hz/1ph) . . . . .	000007675
c. 208-230V/50 Hz/1ph) . . . . .	85-0400-3
7 <b>Start Capacitor</b>	
a. 115V/60 Hz/1ph) . . . . .	85-0577-3
b. 208-230V/50-60 Hz/1ph) . . . . .	85-0383-3
<b>Miscellaneous – Brackets, Screws, etc.</b>	
8 Control Board Box . . . . .	000007927
9 Control Board Box Cover . . . . .	000007928
10 Start Components Box . . . . .	000008623
11 Start Components Box Top Cover . . . . .	606968-1
12 Start Components Box Side Cover . . . . .	000008620
13 Control Board Mounting Supports . . . . .	43-0225-3
14 Capacitor Mounting Brackets . . . . .	50-0530-3
15 Screws, #10-24 x .50 Ground . . . . .	52-0216-9
a. Star Washer . . . . .	55-7320-9
16 Screw, #10-24 x .50 . . . . .	52-0206-9
17 Lockwashers . . . . .	55-7320-9
18 Control Box Bushings	
a. 0.5" - pack of 6 . . . . .	25-0218-9
b. 1" - pack of 4 . . . . .	25-0001-9
c. 1.5" - pack of 2 . . . . .	25-0013-9
19 <b>Control Box Wiring Harness</b> (Not shown)	
a. 115/60/1 . . . . .	000007839
b. 230/60/1 . . . . .	000007840
c. 230/50/1 . . . . .	000007841
20 <b>Compressor Compartment Wiring Harness</b> (Not shown) . . . . .	20-0852-3

## i522 EVAPORATOR COMPARTMENT - COMMON COMPONENTS

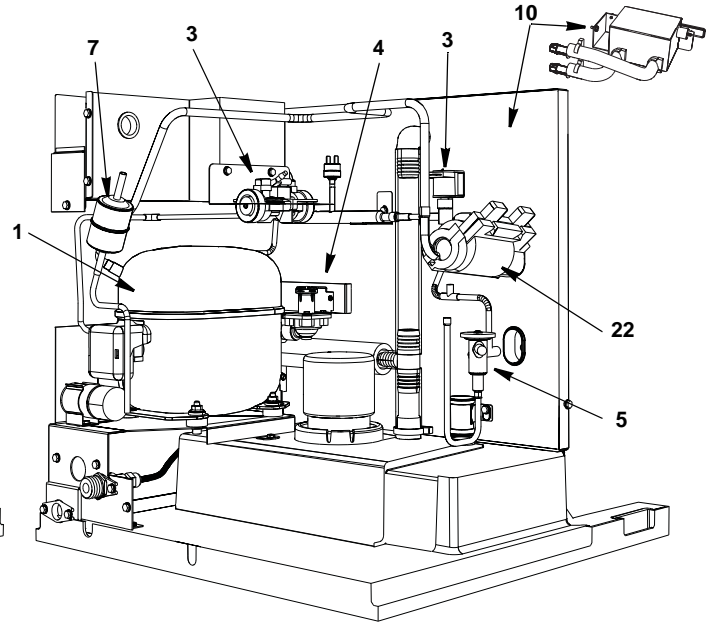
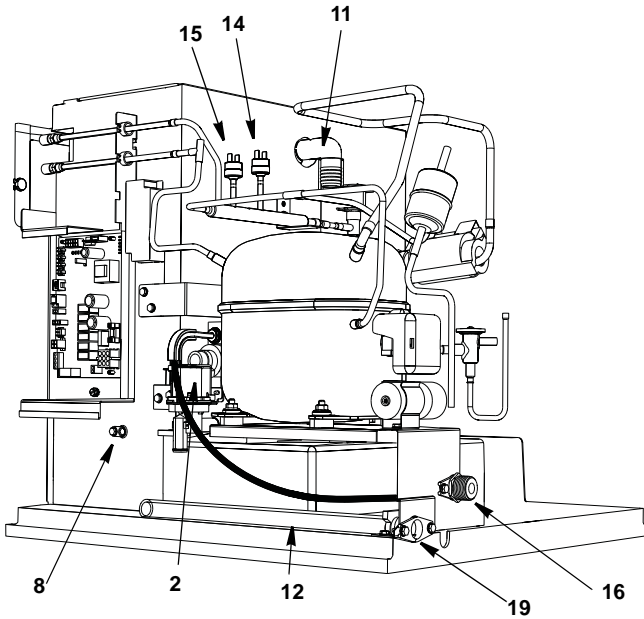


### DESCRIPTION

### PART NO.

1	<b>Evaporator Assembly</b>	
	a. Dice Cube . . . . .	76-0287-9
	b. Half Dice Cube . . . . .	76-0288-9
2	<b>Water Pump</b>	
	a. 115V/60 Hz 1PH . . . . .	20-0767-9
	b. 230V/60 Hz 1/3PH . . . . .	20-0766-9
	c. 230/50/1 . . . . .	20-0765-9
3	<b>Water Level Probe</b>	
	a. Wire, control box to probe (Not shown). . . . .	000007052
	b. Holder . . . . .	000007053
	c. Screw (Mount Water Level Probe Holder) . . . . .	52-0209-9
4	Ice Thickness Control Probe . . . . .	000008660
5	Water Curtain (Not shown) . . . . .	40-1118-9
6	Water Distribution Tube Assembly . . . . .	76-0278-9
	a. O-Rings (Back of Distribution Assembly) . . . . .	50-0464-9
7	Water Trough . . . . .	40-0914-9
8	Foodzone Seal Panel . . . . .	000007777
9	Evaporator Top Filler Panel . . . . .	606538-9
	a. Stainless Steel Clamp . . . . .	606333-9
	b. Clamp Screw . . . . .	52-0209-9
10	Evaporator Top Frame Assembly . . . . .	76-0279-9
11	Water Diverter . . . . .	76-0221-3
	a. Thumbscrew . . . . .	53-0512-3
12	LCD Display . . . . .	000006728
13	Touch Pad with Housing . . . . .	000008064
14	LCD Wiring Harness (Not shown) . . . . .	000007828
15	Touch Pad/Housing Mounting Bracket . . . . .	000006697
16	Key Guard (Not shown) . . . . .	000006647
	<b>Miscellaneous – Brackets, Screws, etc.</b>	
17	Screw, (Water Distribution Tube Mounting) Each . . . . .	50-0479-9
	a. O-Ring . . . . .	50-0462-9
18	Screw, #12-16 x .687 Used to Mount Evaporator (Each) . . . . .	50-0461-9
19	Water Pump Base O-Ring . . . . .	50-0465-9
20	Water Pump Outlet O-Ring . . . . .	50-0467-9

# i522 REFRIGERATION COMPARTMENT – COMMON PARTS



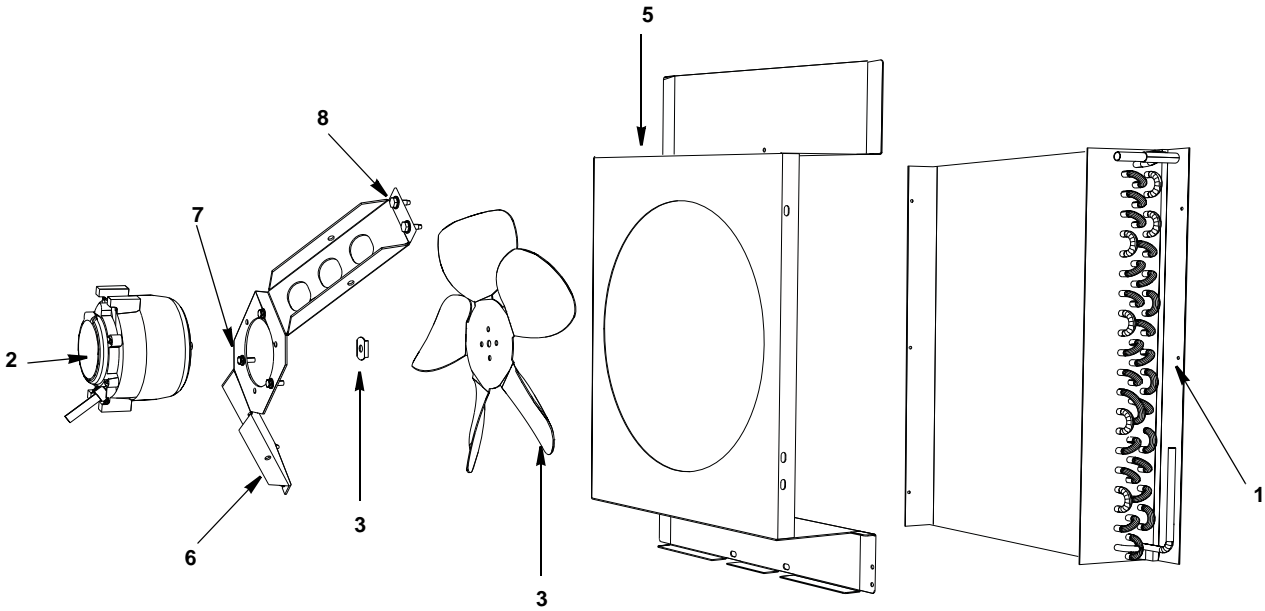
## DESCRIPTION

## PART NO.

<b>1 Compressor</b>		
a. 115V/60 HZ/1 Ph .....		000003919
b. 208-230V/50-60 Hz/1 Ph .....		000003920
<b>2 Water Dump Valve (with bracket)</b>		
a. 115V/60 Hz .....		000001767
b. 208-230V/50-60 Hz .....		000001768
c. Mounting Bracket .....		605845-9
d. Dump Valve Tubing 3.25 inches .....		44-2038-3
<b>3 Harvest Valve</b>		
a. Harvest Valve Including 115V 60 Hz Electrical Coil .....		000007029
b. Harvest Valve 115V Coil Only Danfoss .....		000005156
c. Harvest Valve Including 208/230V 50/60 Hz Electrical Coil .....		000007028
d. Harvest Valve 208/230V Coil Only Danfoss .....		000005157
<b>4 Water Inlet Valve</b>		
a. Water Inlet Valve Including 115V/60 Hz Coil .....		000007965
b. Water Inlet Valve Including 208-230V/50-60 Hz Coil .....		000007966
c. Water Inlet Valve Bracket .....		000007594
<b>5 Expansion Valve</b>		
a. Expansion Valve Body Insulation Boot .....		76-0290-3
b. Expansion Valve Bulb Insulation Boot .....		40-0036-3
<b>6 Thermistors with Spring Clips</b>		
<b>7 Drier</b>		000008310
<b>8 Magnetic Bin Switch</b>		89-3025-9
a. Wiring Harness .....		000007710
<b>9 Air Assist</b>		
a. 115V with brackets .....		000007222
b. 230V with brackets .....		000007223
c. Manifold Tee (Air Pump Tubing Outlet) .....		40-1173-9
d. Bracket .....		000006489
e. Nozzle .....		30-0145-3
<b>10 LuminIce</b>		K00424
a. LuminIce Bulb .....		K00425
b. LuminIce Wiring Harness .....		000007409
c. Bulkhead Fitting 2.25" .....		000007990
d. Bulkhead Fitting 2.75" .....		000008269
<b>11 Insulated Tube (vinyl tubing from distribution tube to water pump &amp; dump valve)</b>		000003404
a. Clamp 0.859/0.989 ID .....		56-5060-3
b. Clamp 0.799/0.899 ID .....		56-5070-3
<b>12 Vinyl Tubing 0.625 ID (dump valve to drain adapter)</b>		000001382
a. Insulation .....		603883-1
b. Clamp .....		56-5070-9
<b>13 Manifold Strainer</b>		000008364
a. Bracket .....		605857-1
<b>14 High Pressure Cut-out (Auto Reset)</b>		20-0124-3
<b>15 Fan Cycle Control</b>		20-0126-3
<b>Miscellaneous – Brackets, Screws, etc.</b>		
<b>16 Water Inlet Wing Adapter</b>		87-0609-3
a. Adapter Plastic Fitting .....		13-6096-1
<b>17 Water Inlet Valve Tubing</b>		40-1043-9
a. Elbow Tube .....		000000288
<b>18 Connector Water Inlet Valve</b>		13-6098-9
<b>19 Water Drain Wing Adapter</b>		87-0613-3
<b>20 Compressor Mounting</b>		
a. Base .....		606026-9
b. Rubber Grommet .....		† 85-0306-9
c. Sleeve .....		85-0394-9
d. Bolt .....		50-0481-9
e. Nut .....		50-0482-9
<b>21 Clamp, Expansion Valve Bulb</b>		56-5052-9
<b>22 Copper Bulb Strap</b>		30-0050-3
<b>23 Screw, #10-24 x .50</b>		52-0206-9

† Refer to Cross Reference Guide

## i522 REFRIGERATION COMPARTMENT – AIR-COOLED



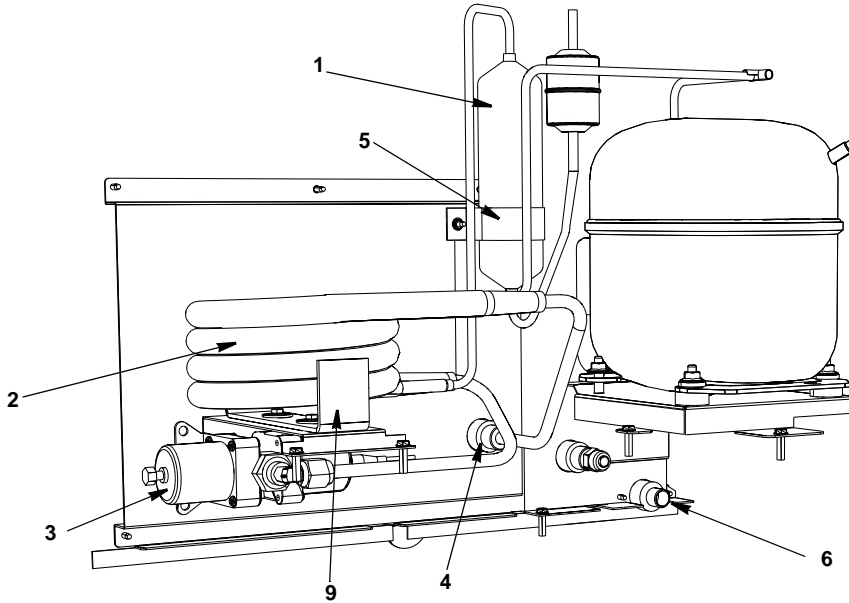
### DESCRIPTION

	<b>DESCRIPTION</b>	<b>PART NO.</b>
1	Air Condenser .....	82-5212-9
2	Fan Motor	
	a. 115V/60 Hz .....	24-1292-9
	b. 208-230V/60 Hz or 230V/50 Hz .....	24-1293-9
3	Fan Blade .....	24-1620-3
4	Speed Nut .....	54-7507-3

### Miscellaneous – Brackets, Screws, etc.

5	Fan Shroud .....	606168-9
6	Fan Motor Bracket .....	606186-9
7	Fan Motor Mounting Screw .....	† 50-3358-9
	a. Fan Motor Mounting Lockwasher .....	† 55-4510-9
	b. Fan Motor Mounting Hexnut .....	† 54-2952-9
8	Fan Bracket Mounting	
	a. Screw .....	50-3238-9
	b. Lockwasher .....	† 55-4510-9
	c. Flatwasher .....	† 55-7305-9
	d. Rubber Wellnut .....	† 54-2955-9
9	Screw, #10-24 x .50 .....	† 52-0206-9

## i522 REFRIGERATION COMPARTMENT – WATER-COOLED



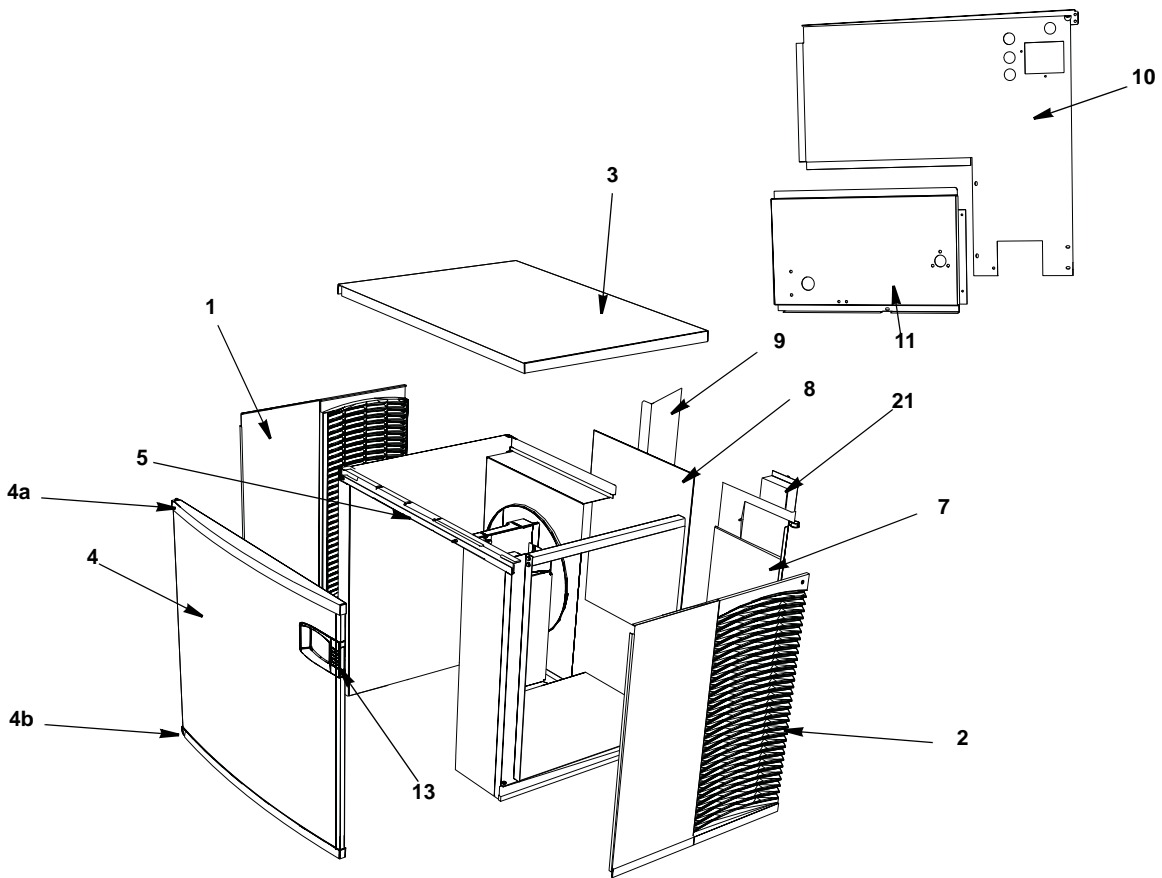
**DESCRIPTION**

	<b>PART NO.</b>
1 Receiver . . . . .	12-0003-1
2 Water-cooled Condenser . . . . .	000000046
3 Water Regulating Valve . . . . .	000007546
a. Bracket . . . . .	000007695
4 Condenser Water Drain Female Wing Adapter . . . . .	87-0608-3

**Miscellaneous – Brackets, Screws, etc.**

5 Receiver Strap . . . . .	600054-1
6 Elbow 3/8 MF x 3/8 MPT . . . . .	50-0215-9
7 Screw, #10-24 x .50 . . . . .	52-0206-3
8 Washer . . . . .	55-7341-9
9 Base, Water Condenser/Receiver . . . . .	605865-9

# i522 PANELS



**DESCRIPTION**

	<b>DESCRIPTION</b>	<b>PART NO.</b>
1	Left Side Panel . . . . .	000005217
2	Right Side Panel . . . . .	000005215
3	Top Cover . . . . .	000007768
4	Front Panel Assembly . . . . .	000006579
	a. Top Endcap . . . . .	000006560
	b. Bottom Endcap . . . . .	000006565
5	Front Top Support . . . . .	000007765
	Mounting Screw Left Side 8-32 x 1 . . . . .	50-0537-9
	Mounting Screw Right Side 10-24 x .50 . . . . .	50-0509-9
6	Back Coupling Panel, Drain/Water Connection (Compressor Base) . . . . .	606026-9
<b>Air-Cooled Back Panels</b>		
7	Back Panel with Electrical Connection Box, Air-cooled Models . . . . .	000008621
8	Air Filter . . . . .	30-0593-9
9	Air Baffle Assembly . . . . .	000007314
<b>Water-Cooled Back Panels</b>		
10	Back Panel with Electrical Connection Box . . . . .	000008622
11	Back Coupling Panel, Water-Cooled . . . . .	000008022
12	Drain Fitting . . . . .	87-0608-3
<b>Miscellaneous – Brackets, Screws, etc.</b>		
13	Front Panel LCD Frame . . . . .	000007046
14	Right/Left Door Screw . . . . .	50-0489-9
15	Bottom Door Frame . . . . .	76-0282-9
	a. Mounting Screw Left Side 8-32 x 1 PHIL . . . . .	50-0537-9
	b. Mounting Screw Right Side 10/24 x .50 PHIL . . . . .	52-0209-9
16	Door Catch Bracket (RHD) . . . . .	606236-9
	a. Mounting Screw 8-32 x .50 Phil . . . . .	50-2624-9
17	Left Door Pivot Leaf Hinge (Top or Bottom) . . . . .	30-0557-9
	a. Mounting Screw 8-32 x 1 PHIL . . . . .	50-0537-9
18	Left Top Channel . . . . .	606864-9
19	Right Top Channel . . . . .	607145-1
20	Left Corner Post . . . . .	606293-9
21	Electrical Connection Box Cover . . . . .	Included in Back Panel Assembly
<b>22</b>	<b>Electrical Box on Rear of Ice Machine</b>	
	a. Box . . . . .	Included in Back Panel Assembly
	b. Terminal Block 3 Pole . . . . .	20-0614-3
	c. Groundscrew #10-24 x .50 . . . . .	52-0216-9