



Ice Machine Parts List for Series i-500 Models

iD0502A

iY0504A

iD0503W

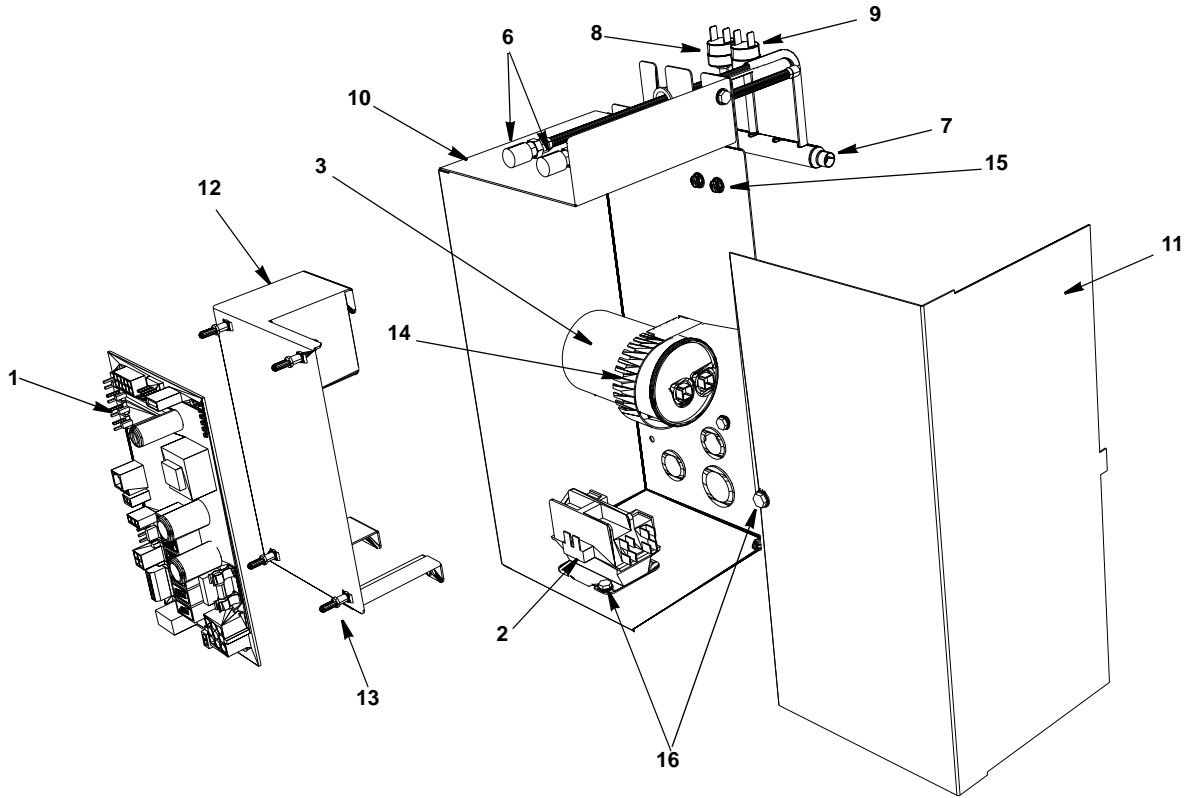
iY0505W

iD0592N

iY0594N

JC0495

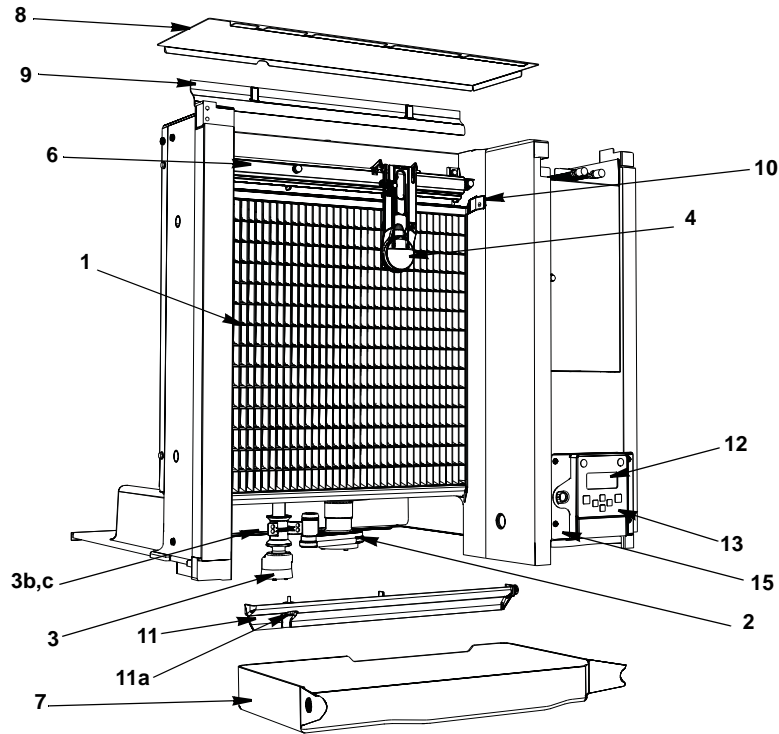
i500 CONTROL BOX



DESCRIPTION

	DESCRIPTION	PART NO.
1	Control Board (for use with all voltages)	000008309
	a. 8 amp Ceramic Fuse – Mounted on Control Board	000009181
2	Contactor	
	a. 115V/60 Hz/1ph.	20-0658-9
	b. 208-230V/60 Hz/1ph or 230V/50 Hz/1ph	20-0659-9
3	Compressor Run Capacitor	
	a. 115V/60 Hz/1ph.	20-1014-3
	b. 208-230V/50-60 Hz/1ph	85-0400-3
4	Start Relay	
	a. 115V/60 Hz/1ph.	20-0205-3
	b. 230V/50-60 Hz/1ph	20-0792-9
5	Start Capacitor	
	a. 115V/60 Hz/1ph.	85-0577-3
	b. 230V/50-60 Hz/1ph	85-0383-3
6	Refrigeration Service Valve Assembly	83-7326-3
7	Manifold Strainer	82-5104-9
	a. Bracket	605857-1
8	High Pressure Cut-out (Auto Reset)	20-0124-3
9	Fan Cycling Control	† 20-0126-3
	Miscellaneous – Brackets, Screws, etc.	
10	Control Box	000007563
11	Control Box Cover	000007569
12	Control Board Mounting Bracket	000007564
13	Control Board Mounting Supports	43-0225-3
14	Capacitor Mounting Strap	602495-3
15	Screws, #10-24 x .50 Ground	52-0216-9
	a. Star Washer	55-7320-9
16	Screw, #10-24 x .50	52-0206-9
17	Lockwashers	55-7320-9
18	Control Box Bushings	
	a. Large (1)	25-0001-9
	b. Small (4)	25-0140-9
19	Control Box Wiring Harness (Not shown)	
	a. 115/60/1	000007172
	b. 230/60/1	000007173
	c. 230/50/1	000007174
20	Compressor Compartment Wiring Harness (Not shown)	
	a. Air-cooled	000007178
	b. Water-cooled	000007176
	c. Remote Air-cooled	000007175

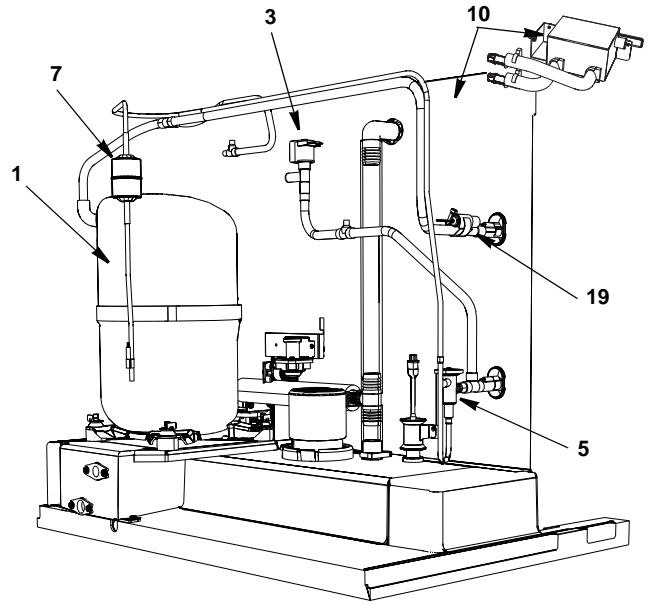
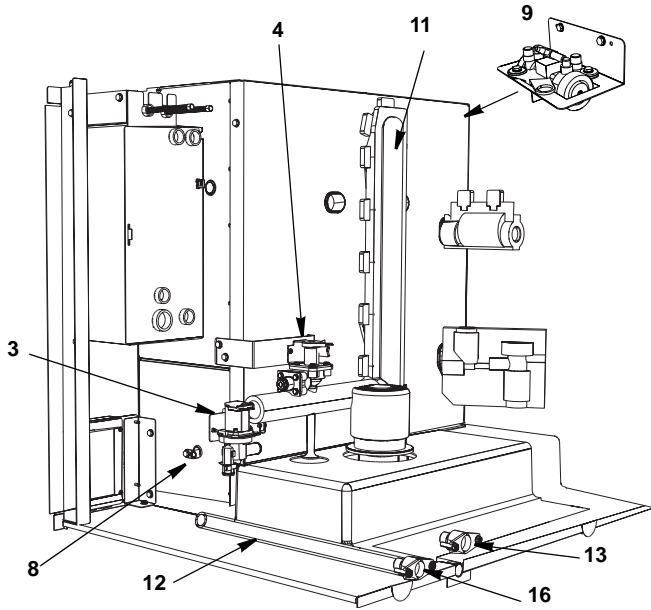
i500 EVAPORATOR COMPARTMENT - COMMON COMPONENTS



DESCRIPTION

	DESCRIPTION	PART NO.
1	Evaporator Assembly	
	a. Dice Cube	76-0283-9
	b. Half Dice Cube	76-0284-9
2	Water Pump	
	a. 115V/60 Hz 1PH	82-5112-9
	b. 230V/60 Hz 1/3PH	20-0739-9
	c. 230/50/1	82-5210-9
3	Water Level Probe.	000007052
	a. Wire, control box to probe (Not shown).	000007099
	b. Holder	000007053
	c. Screw (Mount Water Level Probe Holder)	52-0209-9
4	Ice Thickness Control Probe.	000008660
5	Water Curtain (Not shown)	40-1097-9
6	Water Distribution Tube Assembly	76-0219-3
	a. O-Rings (Back of Distribution Assembly)	50-0464-9
7	Water Trough	40-0360-9
8	Foodzone Seal Panel	000007613
9	Evaporator Top Filler Panel	40-0846-9
	a. Stainless Steel Clamp	606333-9
	b. Clamp Screw.	52-0209-9
10	Evaporator Top Frame Assembly	76-0220-3
11	Water Diverter.	76-0221-3
	a. Thumbscrew	53-0512-3
12	LCD Display	000006728
13	Touch Pad with Housing	000007926
14	LCD Wiring Harness (Not shown).	000007737
15	Touch Pad/Housing Mounting Bracket	000006697
16	Key Guard (Not shown)	000006647
	Miscellaneous – Brackets, Screws, etc.	
17	Screw, (Water Distribution Tube Mounting) Each	50-0479-9
	a. O-Ring	50-0462-9
18	Screw, #12-16 x .687 Used to Mount Evaporator (Each)	50-0461-9
19	Water Pump Base O-Ring	50-0465-9
20	Water Pump Outlet O-Ring	50-0467-9

i500 REFRIGERATION COMPARTMENT – COMMON PARTS

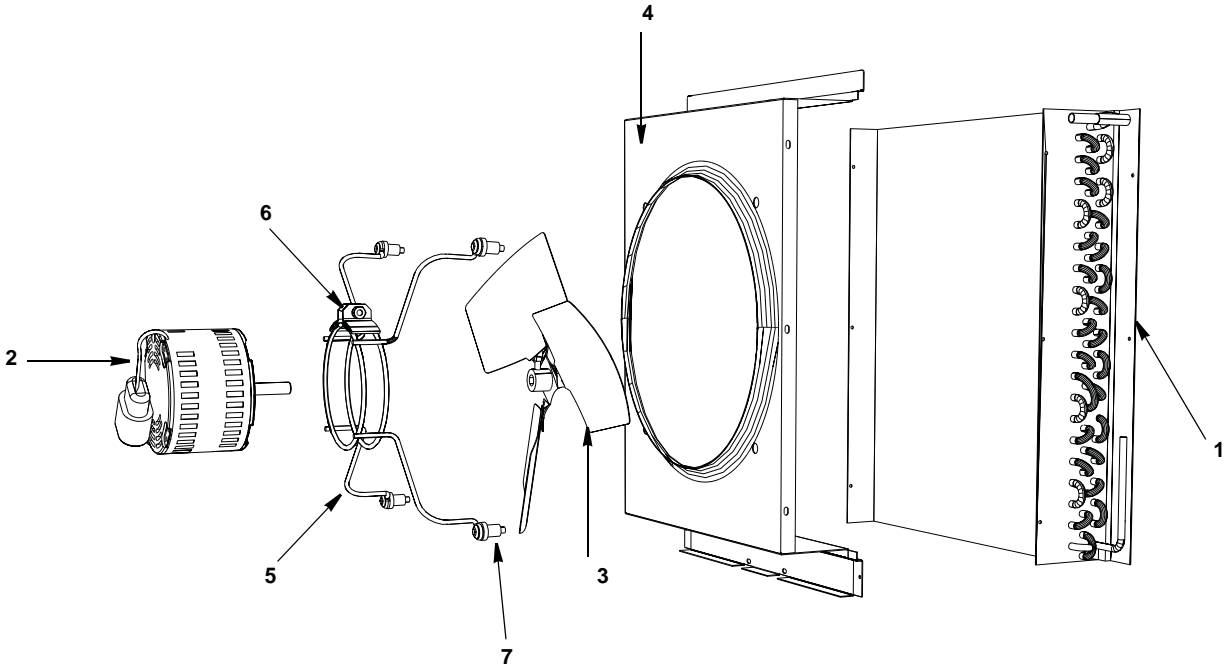


DESCRIPTION

PART NO.

1 Compressor	
a. 115V/60 HZ/1 Ph.	000003919
b. 208-230V/50-60 Hz/1 Ph.	000003920
2 Water Dump Valve (with bracket)	
a. 115V/60Hz.	000001767
a. 208-230V/50-60 Hz.	000001768
b. Mounting Bracket	605845-9
c. Dump Valve Tubing 3.25 inches	44-2038-3
3 Harvest Valve	
a. Harvest Valve Including 115V 60 Hz Electrical Coil	000007027
b. Harvest Valve 115V Coil Only Danfoss	000005156
c. Harvest Valve Including 208/230V 50/60 Hz Electrical Coil	000007026
d. Harvest Valve 208/230V Coil Only Danfoss	000005157
4 Water Inlet Valve	
a. Water Inlet Valve Including 115V/60 Hz Coil	000007965
b. Water Inlet Valve Including 208-230V/50-60 Hz Coil	000007966
c. Water Inlet Valve Bracket	000007594
5 Expansion Valve	
a. Expansion Valve Body Insulation Boot	76-0158-3
b. Expansion Valve Bulb Insulation Boot	40-0036-3
6 Thermistors with Spring Clips	40-0720-3
7 Drier	000008310
a. Air & Water-cooled	89-3025-9
b. Remote	89-3027-9
8 Magnetic Bin Switch	000007710
a. Wiring Harness	000007410
9 Air Assist	
a. 115V with brackets	000007222
b. 230V with brackets	000007223
c. Manifold Tee (Air Pump Tubing Outlet)	40-1173-9
d. Bracket	000006489
e. Nozzle	30-0145-3
10 LuminIce	K00424
a. LuminIce Bulb	K00425
b. LuminIce Wiring Harness	000007409
c. Bulkhead Fitting 2.25"	000007990
d. Bulkhead Fitting 2.75"	000008269
11 Insulated Tube (vinyl tubing from distribution tube to water pump & dump valve).	000003405
a. Clamp 0.859/0.989 ID	56-5060-3
b. Clamp 0.799/0.899 ID	56-5070-3
12 Vinyl Tubing 0.625 ID (dump valve to drain adapter).	000001382
a. Insulation	603883-1
b. Clamp	56-5070-9
Miscellaneous – Brackets, Screws, etc.	
13 Water Inlet Wing Adapter.	87-0609-3
a. Adapter Plastic Fitting	13-6096-1
14 Water Inlet Valve Tubing	40-1043-9
15 Connector Water Inlet Valve	13-6098-9
16 Water Drain Wing Adapter.	87-0613-3
17 Compressor Mounting	
a. Base	606170-9
b. Rubber Grommet	† 85-0306-9
c. Sleeve	85-0394-9
d. Bolt	50-0481-9
e. Nut	50-0482-9
18 Clamp, Expansion Valve Bulb	56-5052-9
19 Copper Bulb Strap	30-0050-3
20 Screw, #10-24 x .50	52-0206-9

i500 Refrigeration Compartment – Air-Cooled



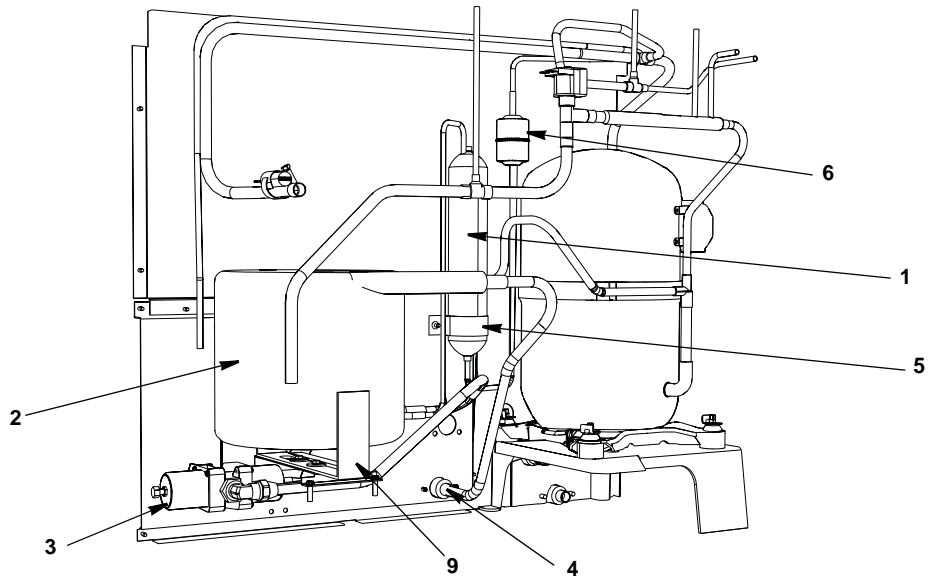
DESCRIPTION

	DESCRIPTION	PART NO.
1	Air Condenser	82-5213-9
2	Fan Motor	
	a. 115V/60 Hz	24-1292-9
	b. 208-230V/60 Hz or 230V/50 Hz	24-1293-9
3	Fan Blade.....	24-1620-3

Miscellaneous – Brackets, Screws, etc.

4	Fan Shroud	000002484
5	Fan Motor Bracket	606186-9
6	Fan Motor Mounting Screw	† 50-3358-9
	a. Fan Motor Mounting Lockwasher	† 55-4510-9
	b. Fan Motor Mounting Hexnut	† 54-2952-9
7	Fan Bracket Mounting	
	a. Screw	50-3238-9
	b. Lockwasher.....	† 55-4510-9
	c. Flatwasher	† 55-7305-9
	d. Rubber Wellnut	† 54-2955-9
8	Screw, #10-24 x .50	† 52-0206-9

i500 REFRIGERATION COMPARTMENT – WATER-COOLED



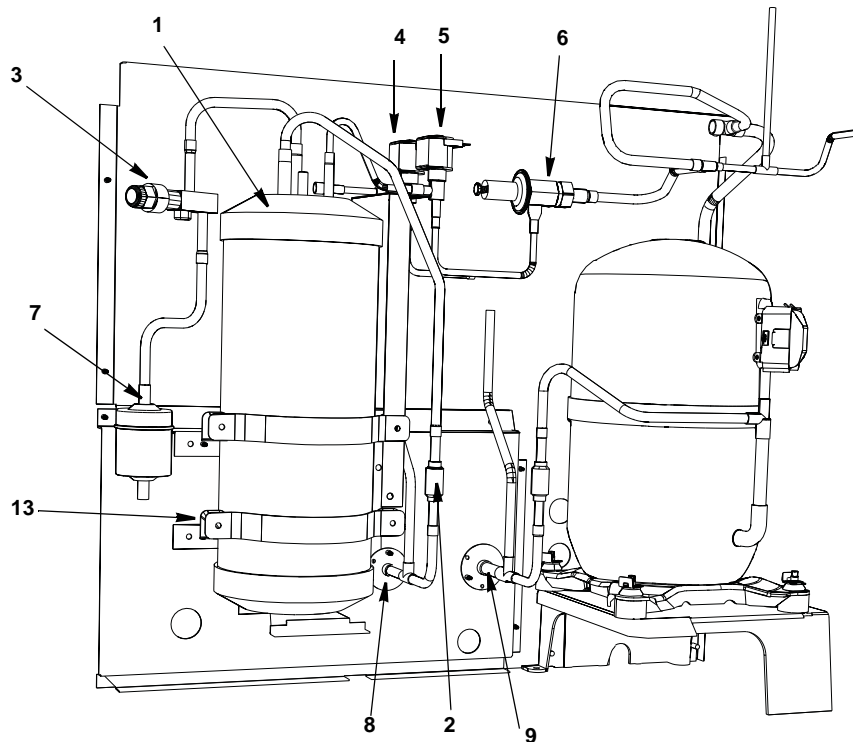
DESCRIPTION

	PART NO.
1 Receiver	12-0003-1
2 Water-cooled Condenser	88-6533-3
3 Water Regulating Valve	82-5282-9
a. Bracket	000007695
4 Condenser Water Drain Female Wing Adapter	87-0608-3

Miscellaneous – Brackets, Screws, etc.

5 Receiver Strap	600054-1
6 Elbow 3/8 MF x 3/8 MPT	50-0215-9
7 Screw, #10-24 x .50	52-0206-3
8 Washer	55-7341-9
9 Base, Water Condenser/Receiver	605865-9

i500 REFRIGERATION COMPARTMENT – REMOTE



DESCRIPTION

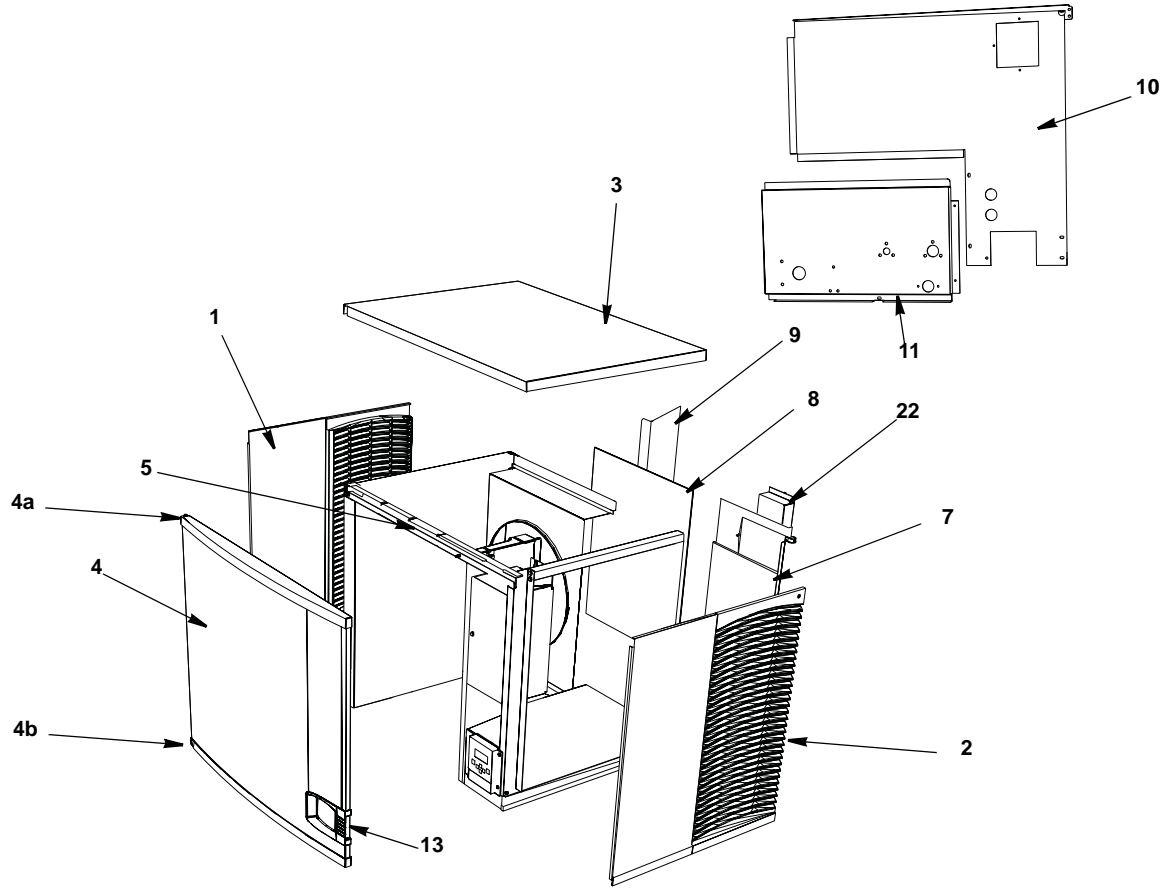
	DESCRIPTION	PART NO.
1	Receiver	82-5058-3
2	Magni-Check Valve	† 83-7314-9
3	Refrigeration Service Valve	† 83-7316-9
	a. Cap for Refrigeration Service Valve	56-5075-9
4	Harvest Pressure Regulating Solenoid (HPR) Valve	
	a. HPR Valve Including 115V 60 Hz Electrical Coil (Danfoss)	000007035
	b. HPR Valve 115V 60 Hz Coil Only Danfoss	000005156
5	Liquid Line Solenoid (LLS) Valve	
	a. LLS Valve Including 115V 60 Hz Electrical Coil (Danfoss)	000007035
	b. LLS Valve 115V 60 Hz Coil Only Danfoss	000005156
6	Harvest Pressure Regulating Valve (HPR)	† 83-6779-3
7	Drier	89-3027-9
8	Coupling – Male, 5/8-18	† 83-6034-3
9	Coupling – Male, 1-1/6-12	† 83-6035-3

Miscellaneous – Brackets, Screws, etc.

10	Coupling Mounting Flange for 5/8-18	83-6005-3
11	Coupling Mounting Flange for 1-1/16-12	83-6006-3
12	Drier Support Bracket	56-5061-9
13	Receiver Mounting	
	a. Bracket (between receiver and panel)	600056-1
	b. Strap	630721-4
	c. Support Bracket	000006721
	d. Base	605865-9
	e. Screw, #10-24 x .50	† 52-0206-9

† Refer to Cross Reference Guide

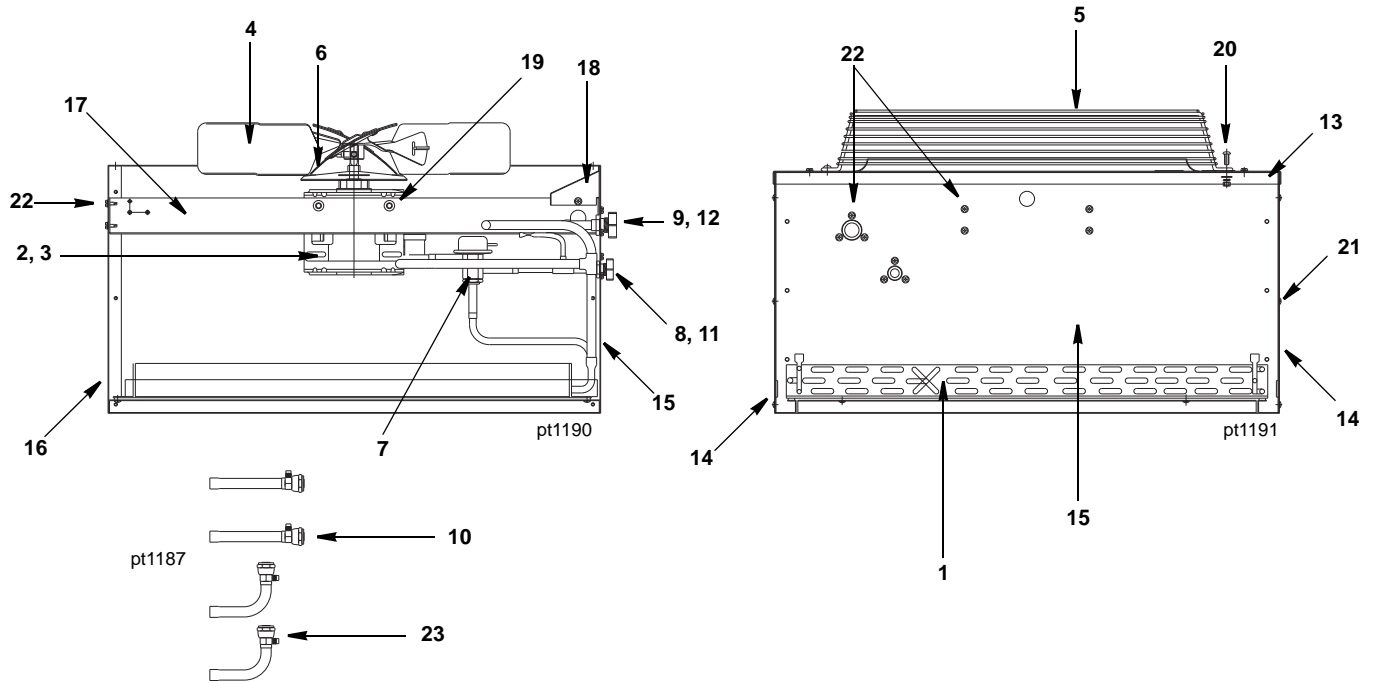
i500 PANELS



DESCRIPTION

	DESCRIPTION	PART NO.
1	Left Side Panel	00005217
2	Right Side Panel	00005215
3	Top Cover	00006699
4	Front Panel Assembly	00006577
a.	Top Endcap	00006538
b.	Bottom Endcap	00006539
5	Front Top Support	00006730
	Mounting Screw Left Side 8-32 x 1	50-0537-9
	Mounting Screw Right Side 10-24 x .50	50-0509-9
6	Back Coupling Panel, Drain/Water Connection (Compressor Base)	606170-9
Air-Cooled Back Panels		
7	Back Panel with Electrical Connection Box, Air-cooled Models	606296-9
8	Air Filter	30-0556-9
9	Air Baffle Assembly	000007314
Water-Cooled & Remote Air-Cooled Back Panels		
10	Back Panel with Electrical Connection Box	607207-1
11	Back Coupling Panel, Water-Cooled/Remote Connections	606173-9
12	Drain Fitting	87-0608-3
Miscellaneous – Brackets, Screws, etc.		
13	Front Panel LCD Frame	00006564
14	Right/Left Door Screw	50-0489-9
15	Bottom Door Frame	76-0226-3
a.	Mounting Screw Left Side 8-32 x 1 PHIL	50-0537-9
b.	Mounting Screw Right Side 10/24 x .50 PHIL.	52-0209-9
16	Door Catch Bracket (RHD)	606236-9
a.	Mounting Screw 8-32 x .50 Phil	50-2624-9
17	Left Door Pivot Leaf Hinge (Top or Bottom)	30-0557-9
a.	Mounting Screw 8-32 x 1 PHIL.	50-0537-9
18	Left Top Channel	606864-9
19	Right Top Channel	606257-9
20	Left Corner Post	606293-9
21	Right Corner Post	606292-9
22	Electrical Connection Box Cover	Included in Back Panel Assembly
23	Electrical Box on Rear of Ice Machine	
a.	Box	Included in Back Panel Assembly
b.	Terminal Block 3 Pole	20-0614-3
c.	Groundscrew #10-24 x .50	52-0216-9

JC0495 REMOTE CONDENSER



DESCRIPTION

	PART NO.
1 Air Condenser	† 88-5063-9
2 Fan Motor (115V/60 Hz/1 Ph)	† 76-2942-3
3 Fan Motor Run Capacitor	No Longer Available
4 Fan Blade	24-1611-3
5 Fan Guard	34-0064-3
6 Rain Slinger	24-1505-3
7 Head Pressure Control	000004070
8 Coupling – Male, 5/8-18	† 83-6034-3
9 Coupling – Male, 1-1/6-12	† 83-6035-3
10 Female Line Set Coupling Kit (Sold as Finished Goods Sales Kit)	Sales K0129

Miscellaneous – Brackets, Screws, etc.

11 Coupling Mounting Flange (for 5/8-18)	83-6005-3
12 Coupling Mounting Flange (for 1-1/16-12)	83-6006-3
13 Top Cover	† 601775-1
14 Panel – Side	† 601774-1
15 Panel – Rear	† 601773-1
16 Panel – Front	† 601772-1
17 Fan Motor Mounting Bracket	† 601768-1
18 Electrical Box Cover	† 601776-1
19 Fan Motor Mounting Screw (5/16-18 x 5/8)	† 50-3565-9
a. Fan Motor Mounting Flatwasher	† 55-7309-9
b. Fan Motor Mounting Lockwasher	† 55-7313-9
c. Fan Motor Mounting Hexnut	54-2975-9
20 Fan Guard Mounting Screw (1/4-20 x 5/8)	† 50-3345-9
a. Fan Guard Mounting Flatwasher	† 55-7304-9
b. Fan Guard Mounting Lockwasher	† 55-4511-9
c. Fan Guard Mounting Hexnut	† 54-2952-9
21 Panel/Condenser Mounting Screw (#8 x 1/2)	† 51-2153-9
a. Panel/Condenser Mounting Lockwasher	† 55-4459-9
22 Screw (#10-24 x 1/2)	† 52-0206-9
23 Valve Cores (used in linesets)	76-2684-3